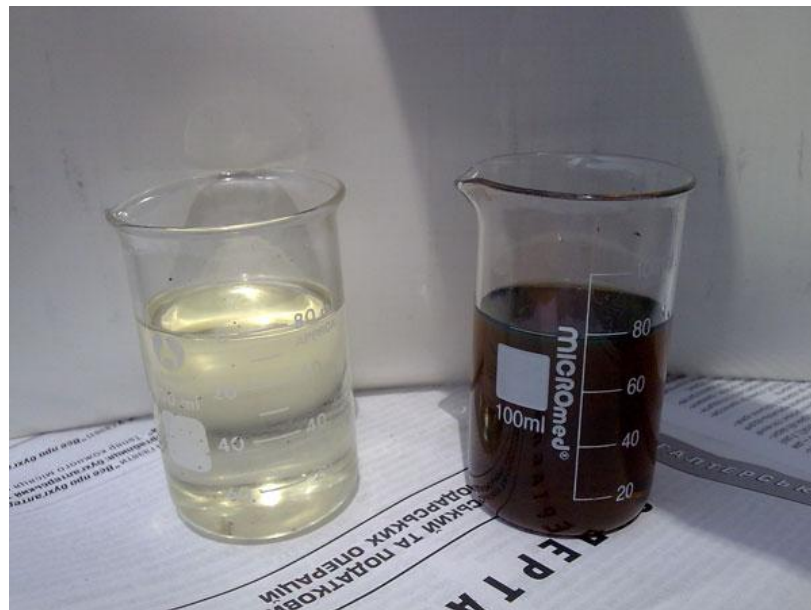


REGENERATION PLANT FOR PETROLEUM PRODUCTS



- ***Suitable for every mineral oil***
- ***Low cost of regeneration***
- ***Simple to install and use***

Capacity, L/H	
• Hydraulic oil	100-130
• Compressor oil	100-130
• Lubricating oil	100-130
• Transformer oil	100-130
• Turbine oil	100-130
• Diesel fuel	200-250
Consumption of bleaching clay, % from oil volume	
• Transformer oil	5-7
• Turbine oil	5-7
• Industrial oil	5-7
• Diesel fuel	2-7
Volume of bleaching earth, kg	
• 1 regeneration module	8-10
• 10 regeneration modules	160-200
Oil loses in % from initial oil	
• Transformer oil	3-5
• Turbine oil	3-5
• Industrial oil	3-5
• Diesel fuel	1,5-3
Power, kW	
Installed heating capacity	6,6 kW
Installed capacity	10 kW
Oil filtration, μm	
Filtration fineness	
- inlet filter	5 μm
- outlet filter	3 μm
Dimensions, mm	
Length	2650
Width	1400
Height	2100
Weight	1000 kg



Appearance of oil after treatment

For further details contact: Andrej Kulish, +4944842023599, sales@globecore.de

